



# Hartford Line Windsor Station

## Windsor Station:

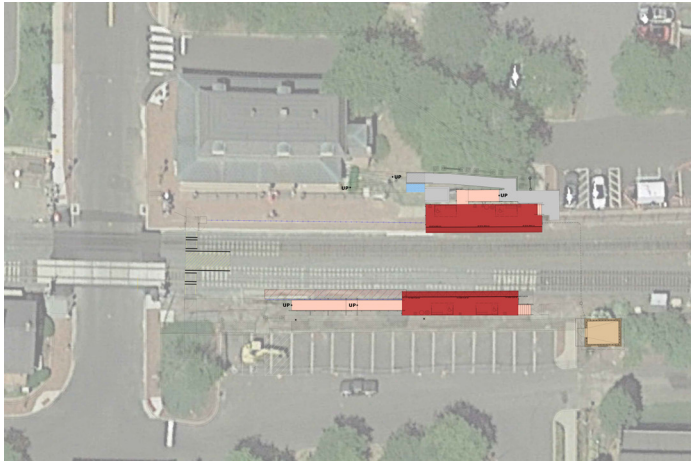
As part of the New Haven - Hartford - Springfield (NHHS) Rail Program, the station stop will be updated to meet ADA level boarding requirements.

## Station Improvements:

Planned amenities at Windsor station will increase public access, safety, and comply with current ADA requirements.

- Installation of short high-level platforms on each side of the tracks
- Sheltered waiting areas
- Real-time train arrival displays on platforms
- Snow melt systems at ramps and on platforms
- Parking on both the east and west sides of the tracks
- Security cameras and emergency phones

## Station Design:



## NHHS Corridor Stations

### EXISTING STATIONS

- New Haven Union Station
- New Haven State Street Station
- Wallingford
- Meriden
- Berlin
- Hartford
- Windsor
- Windsor Locks
- Springfield

### FUTURE STATIONS

- North Haven
- Newington
- West Hartford
- Enfield



### SIGN UP - STAY INFORMED!

Visit the NHHS Program's website at [www.nhhsrail.com](http://www.nhhsrail.com) and subscribe for email alerts to receive the latest information. You may also visit us on Facebook and Twitter!



## Hartford Line Service:

Launched in June 2018, the new **CTrail** Hartford Line passenger rail service increases the number of trips serving the NHHS Rail Corridor. Hartford Line service features 17 daily round trips between New Haven and Hartford, with 12 of these trips continuing north, operating between Hartford and Springfield, MA. Trains operate at speeds up to 110 MPH, with travel time between New Haven and Springfield of approximately 81 minutes. Hartford Line service provides direct or connecting service to New York City, Boston, and Vermont.